

IKU IE Undergraduate Program - Elective course concentrations

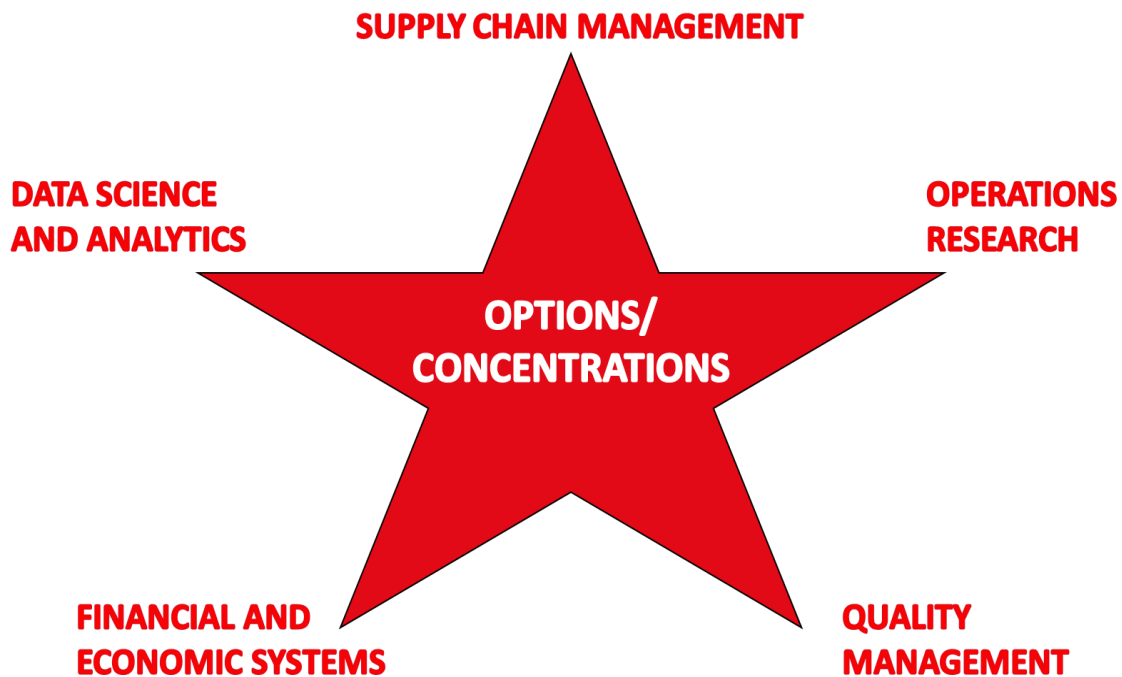
The undergraduate program offers a wide range of courses aimed at developing both the analytical skills and management understanding of our students. Graduates graduate with an understanding and understanding of how different parts of a system interact and how they can be configured to achieve a common goal.

By strengthening the infrastructure of probability, statistics, mathematical modeling and economics in the undergraduate program, students are allowed to concentrate on different areas of basic industrial engineering and management according to their individual preferences.

When making a career plan, students can choose courses by considering these areas of expertise. They can create a program where they can increase their expertise by taking elective courses in the relevant fields.

These fields are:

- Operations Research
- Supply Chain Management
- Data Science and Analytics
- Quality Management
- Financial and Economic Systems



DATA SCIENCE AND ANALYTICS



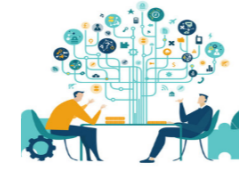
- CSE0440 Artificial Intelligence
- CSE0448 Big Data Analytics
- CSE0457 Web Mining
- CSE0496 Graph Theory and Social Networking
- IE0005 Introduction to Fuzzy Modelling
- IE0007 Advanced Excel Applications
- IE0104 Introduction to Data Mining
- IE0106 Forecasting Methods and Applications
- IE0107 Applied Machine Learning
- IE0306 Database Management Systems

SUPPLY CHAIN MANAGEMENT



- IE0007 Advanced Excel Applications
- IE0106 Forecasting Methods and Applications
- IE0204 Case Studies in Mathematical Modelling
- IE0205 Introduction to Decision Analysis
- IE0206 System Dynamics
- IE0301 System Analysis
- IE0302 Enterprise Resource Planning
- IE0303 Management Information Systems
- IE0305 Business Simulation
- IE0306 Database Management Systems
- IE0307 Technology Management
- IE0308 Applied Business Process Management
- IE0309 IT Service Management
- IE0408 Scheduling Applications in Manufacturing and Services
- IE0409 Project Management
- IE0411 Logistics Systems
- IE0413 Service Management
- IE0414 Lean Management Principles and Practice
- IE0415 Sustainability Management
- IE0504 Strategic Management

OPERATIONS RESEARCH



- CSE0440 Artificial Intelligence
- CSE0496 Graph Theory and Social Networking
- IE0005 Introduction to Fuzzy Modelling
- IE0007 Advanced Excel Applications
- IE0104 Introduction to Data Mining
- IE0105 Pricing and Revenue Management
- IE0106 Forecasting Methods and Applications
- IE0107 Applied Machine Learning
- IE0204 Case Studies in Mathematical Modelling
- IE0205 Introduction to Decision Analysis
- IE0408 Scheduling Applications in Manufacturing and Services
- IE0409 Project Management
- IE0411 Logistics Systems
- IE0604 Computer Integrated Manufacturing Systems
- IE0605 Advanced Manufacturing Systems
- IE0901 Special Topics in Industrial Engineering
- IE0902 Case Studies in Industrial Engineering



FINANCIAL AND ECONOMIC SYSTEMS

- IE0005 Introduction to Fuzzy Modelling
- IE0007 Advanced Excel Applications
- IE0008 Cryptocurrency and Blockchain
- IE0104 Introduction to Data Mining
- IE0105 Pricing and Revenue Management
- IE0106 Forecasting Methods and Applications
- IE0206 System Dynamics
- IE0302 Enterprise Resource Planning
- IE0305 Business Simulation
- IE0504 Strategic Management
- IE0505 Marketing Management
- IE0506 Introduction to Business Management
- IE0509 Managerial Skills for Industrial Engineers
- IE0510 Entrepreneurship for Industrial Engineers
- IE0511 Case Studies in Managerial Finance
- IE0608 Introduction to Renewable Energy
- IE0609 Introduction to Energy Management



QUALITY MANAGEMENT

- IE0007 Advanced Excel Applications-
- IE0106 Forecasting Methods and Applications
- IE0307 Technology Management
- IE0308 Applied Business Process Management
- IE0409 Project Management
- IE0410 Quality Planning and Analysis
- IE0413 Service Management
- IE0414 Lean Management Principles and Practice
- IE0415 Sustainability Management
- IE0416 Customer Experience Management
- IE0417 Product Management
- IE0504 Strategic Management
- IE0506 Introduction to Business Management
- IE0509 Managerial Skills for Industrial Engineers
- IE0510 Entrepreneurship for Industrial Engineers